

RedeORBEA -The Portuguese Animal Welfare Bodies Network. A Sum Greater Than its Parts

Nuno Henrique Franco^{1,2}

1. RedeORBEA Coordinator

2. i3S – University of Porto, Portugal

June 3rd 2025

felasa2025.eu



The Portuguese Landscape

- **No tradition** of AWB or AW officers in Portugal, prior to 2010/63 Directive
- Ethics Committees were not mandatory
- EU Directive raised challenges regarding its implementation, in Portugal



The Portuguese Landscape

- Portuguese transposition **establishes central role for AWBs** in project evaluation – “Non-binding appraisal”
- No further guidance from the CA or National Committee

National Committee?
What National Committee?

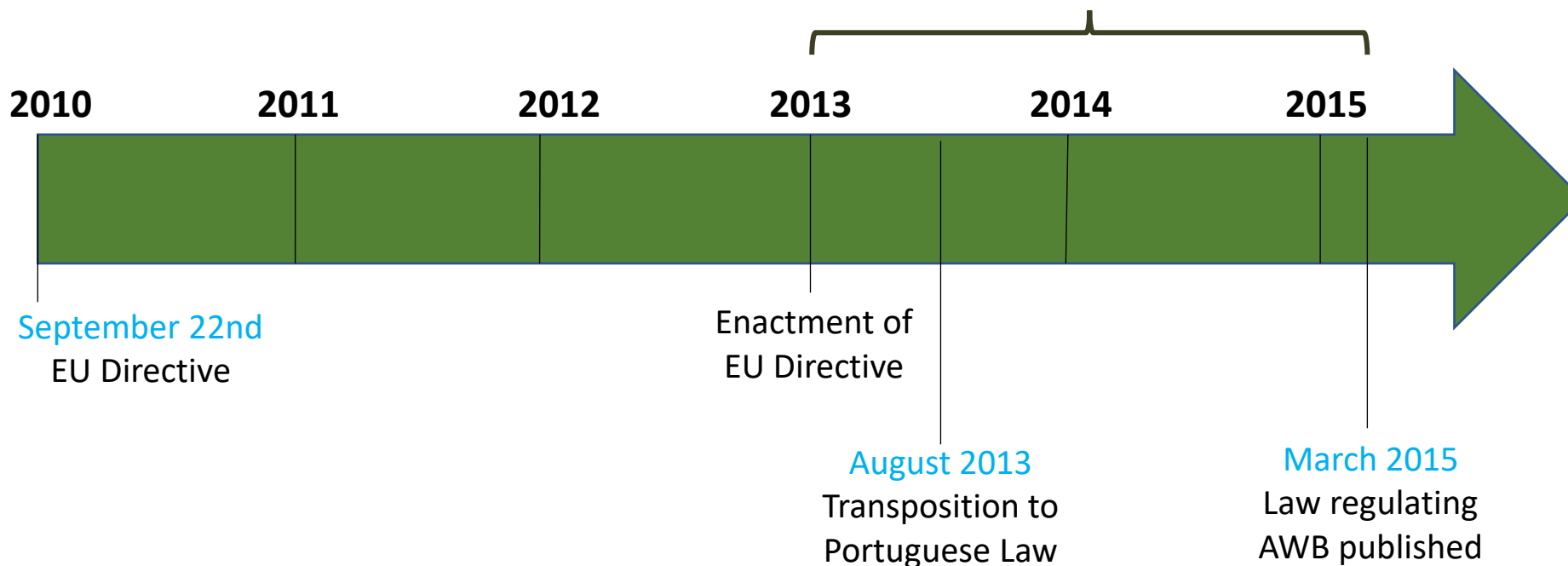


The Portuguese Landscape

In both academia and industry, establishments faced challenges regarding:

- Implementation
- Framing AWB activity within institutions
- Complying with regulatory demands.

SAILING IN UNCHARTED, TROUBLED WATERS!



The Portuguese Landscape

Sailing in uncharted, troubled waters...



Is something we do quite well...

The Portuguese Landscape



- “So we decided to figure it out ourselves”



Anna Olsson



Ana Isabel Santos



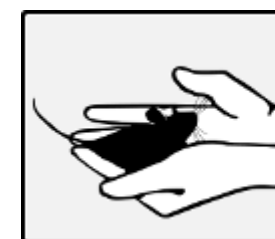
Nuno Franco

Supported by:



- Organized two consecutive workshops (Porto and Lisbon), with overall 35 participants from the main 16 Portuguese research institutes
- Invited Gianni dal Negro

The Portuguese Landscape



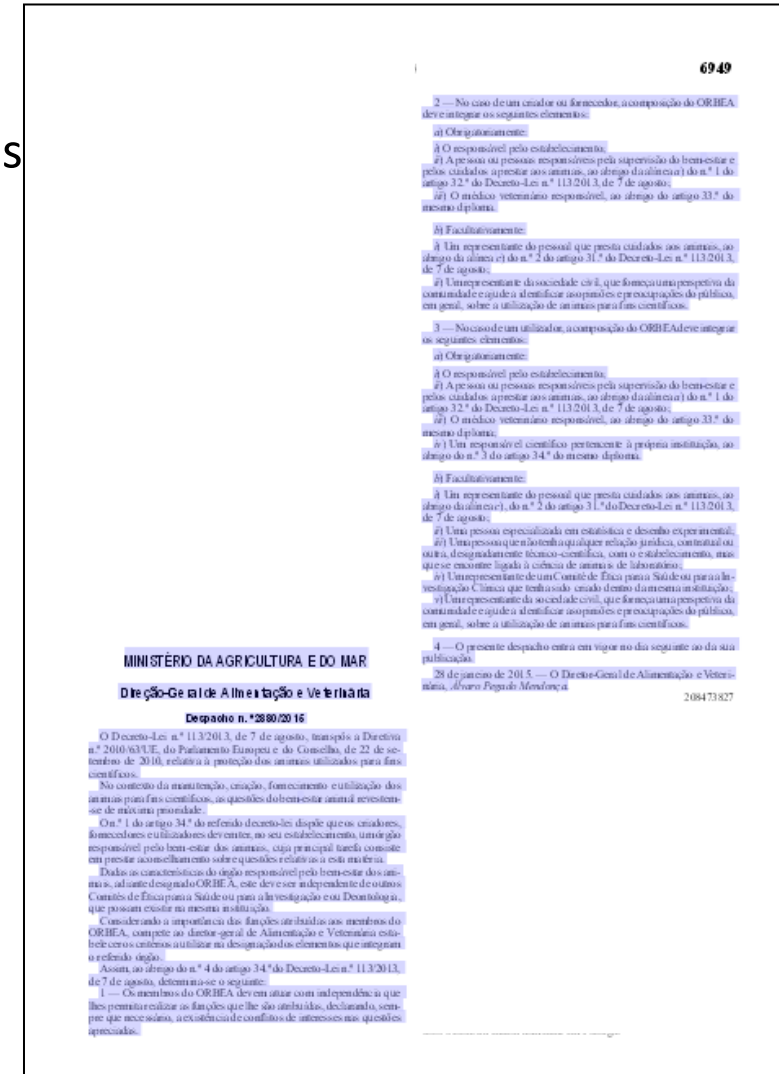
SPCAL
Sociedade Portuguesa de
Ciências em Animais
de Laboratório

- 18th June 2014 | Institute for Molecular and Cell Biology - IBMC, University of Porto
- 19th June 2014 | NOVA Medical School, Universidade Nova de Lisboa, Lisboa

The Portuguese Landscape



- 2015 - National regulation of AWBs (half a page long)
- Establishes independency of AWBs from ethics/deontological committees
- **Determines who should integrate the AWBs:**
- Mandatory members:
 - Person in charge for the establishment
 - Person(s) responsible for animal care and welfare
 - Designated vet
 - Scientific member
- Optional members:
 - Representative of animal care staff
 - Specialist on statistics and experimental design
 - External laboratory animal science specialist
 - Representative of ethics committee for clinical research
 - Lay person

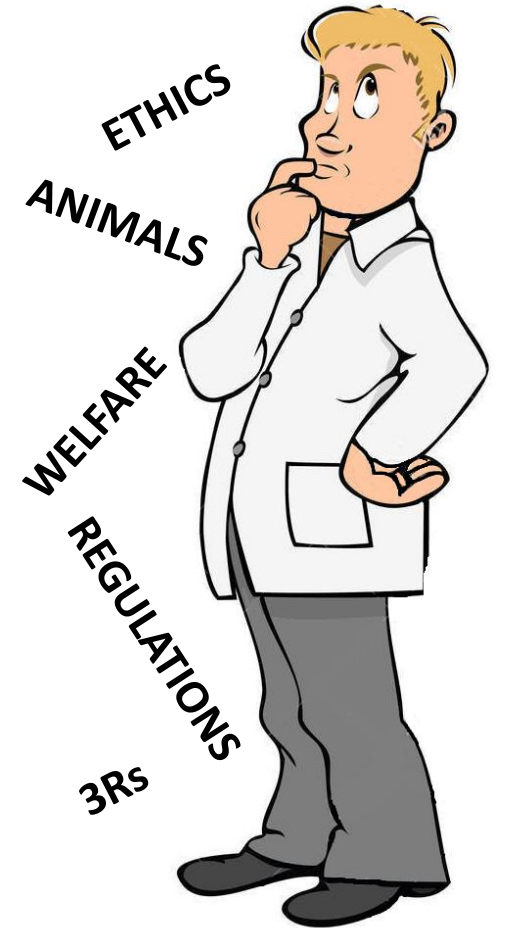


The birth of RedeORBEA



Workshops aimed at:

- Contributing to establishing AWBs in Portugal
- Helping meet high standards of competence, functionality and integration with home institution.
- Positively affect both the quality of animal studies and animal welfare.
- Be a starting point for a network of national AWBs.



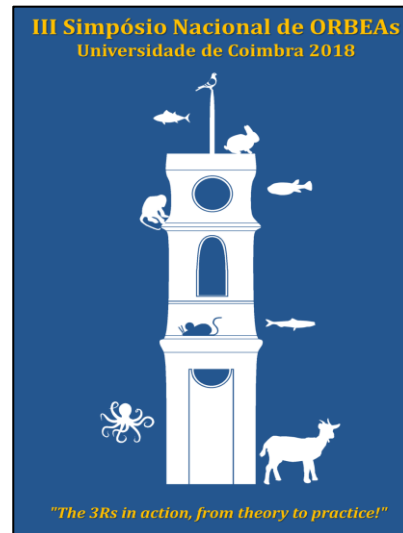
“We should do this more often”



Porto



Lisboa



Coimbra



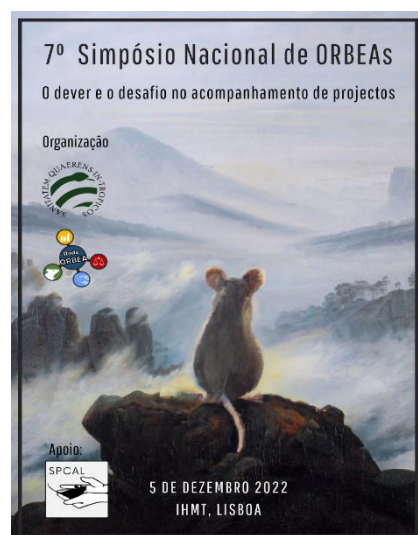
Porto



Lisboa (on-line)



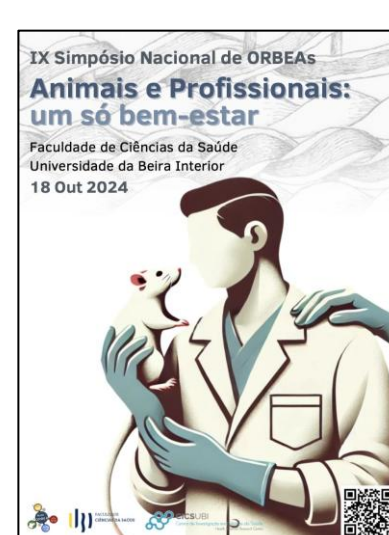
Peniche



Lisboa



Coimbra/Cantanhede



Covilhã



10th Symposium
2025

What do we do?



- Help establish other ORBEAs
- Ask questions, share experiences, disseminate information between specialists
- Harmonize principles and practice across institutions, and raise standards.
- Promote training courses and workshops
- Have a strong, sound, coherent voice when communicating with the CA
- Network with similar associations across Europe – **ENAWB!**
- (Eventually) liaise with National Committee for the Protection of Animals Used for Scientific Purposes

What else do we do?

- Regular census
- Mailing list
- Website (written in plain language)
- Talking to the press
- Helping establish new ORBEAS
- Collaborate in scientific research



Learning from our experiences

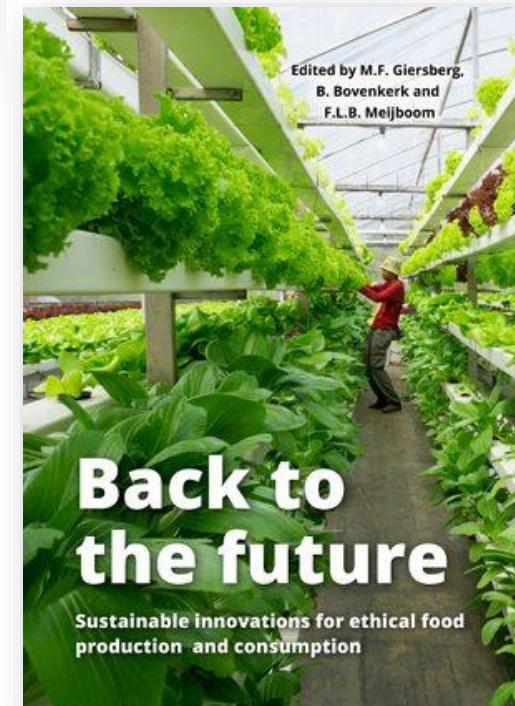


Section 3. Veterinary and animal ethics

Between the beast and the boss: Work psychology challenges for animal health and welfare staff

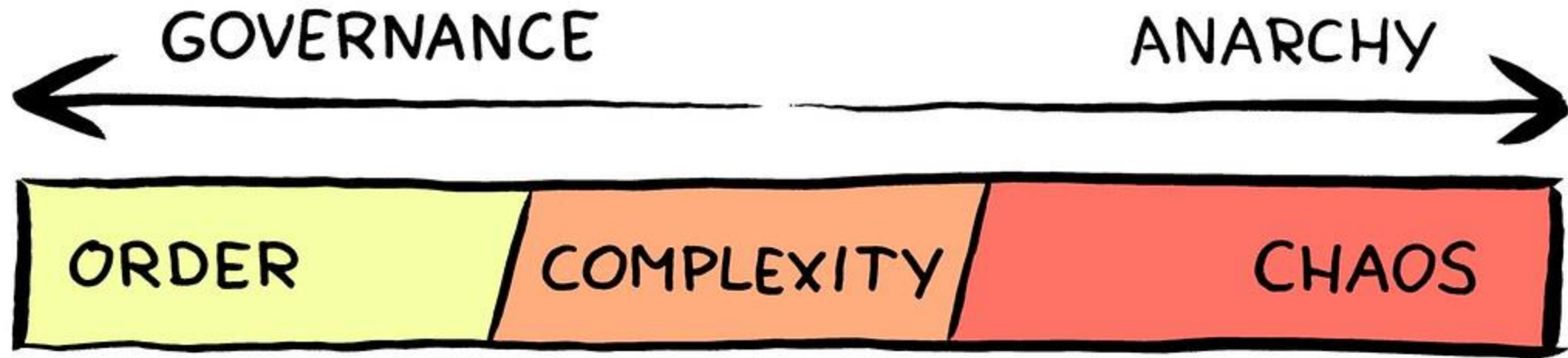
D.N. Costa¹, D. Rolo², N.H. Franco³, M. Magalhães-Sant'Ana⁴ and I.A.S. Olsson³

Costa et al (2024) EurSafe2024 Proceedings. Wageningen Academic, 342-347.



Governance

- Informal network – no registration, no fees
- “Absolutist totalitarian democracy” – 2 co-opted coordinators
- Website, symposia and mailing list funded by SPCAL
- Increasingly financially independent → sponsors



What next?

- Strengthen cooperation at the European level – funding?
- Engage more actively in CPD, following the new E&T framework
- Continue to be a driving force of regulatory compliance, and going beyond it, promoting a Culture of Care:
 - For animals
 - For caretakers
 - For Science



Acknowledgements

redeorbea@spcal.pt



- Anna Olsson
- Ana Isabel Santos
- SPCAL
- RedeORBEA members